

FIG

Tcube

Maintenance Manual

**Fig management
through TOMATO**

List of contents

FIG update through TOMATO	2
Connecting FIG to PC/TOMATO	3
Configuring Ethernet PC address	4
Enabling Bootnet mode on FIG	4
Preparing Fig for TOMATO remote operation	5
Running TOMATO Software	6

FIG update through TOMATO

FIG is a hardware consisting of a powerful OS free computer for video and audio signal processing developed by Tube and software applications.

Each software application consists of

- a license number locked on FIG hardware,*
- software itself*

TOMATO is a software running under Windows 2k or WinXP controlling Tube hardware platforms, KIWI, FIG and CHERRY.

Current section will

- explain the remote update of FIG hardware through the Ethernet connection under TOMATO control.*

Another document entitled *Fig Licences manual* describes licensing, software modules etc... of FIG. Knowledge of this document is mandatory to fully understand current document.

Connecting FIG to PC/TOMATO

Using a cross cable for direct connection or a straight cable when connecting through a Hub/Switch, establish an Ethernet link between Fig and PC

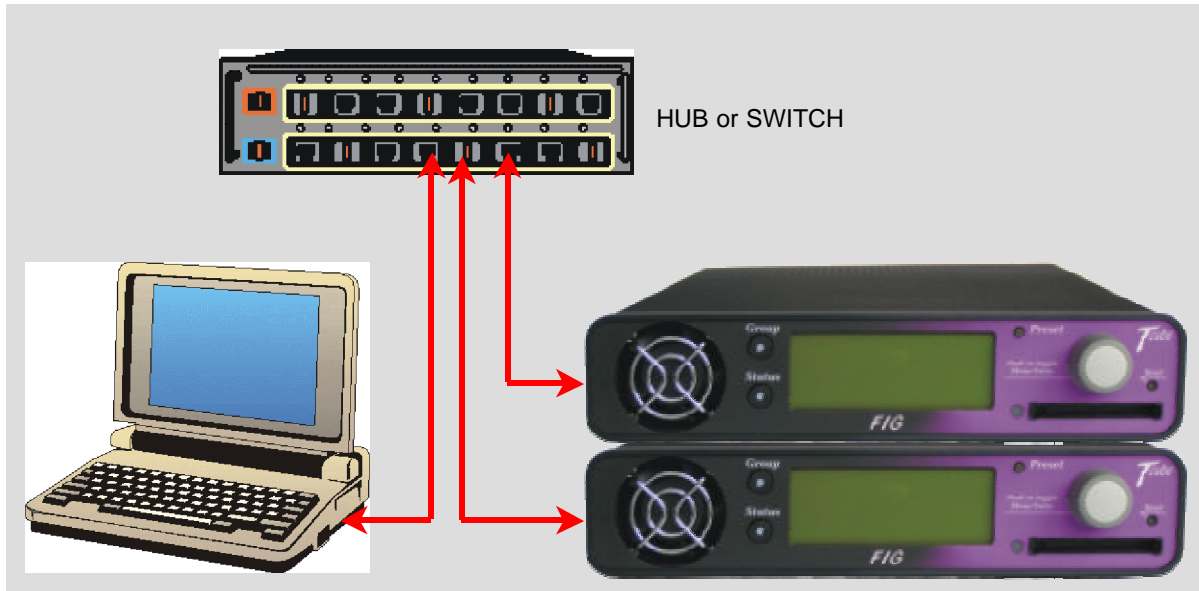


Figure 1 Network cabling with external Hub or switch

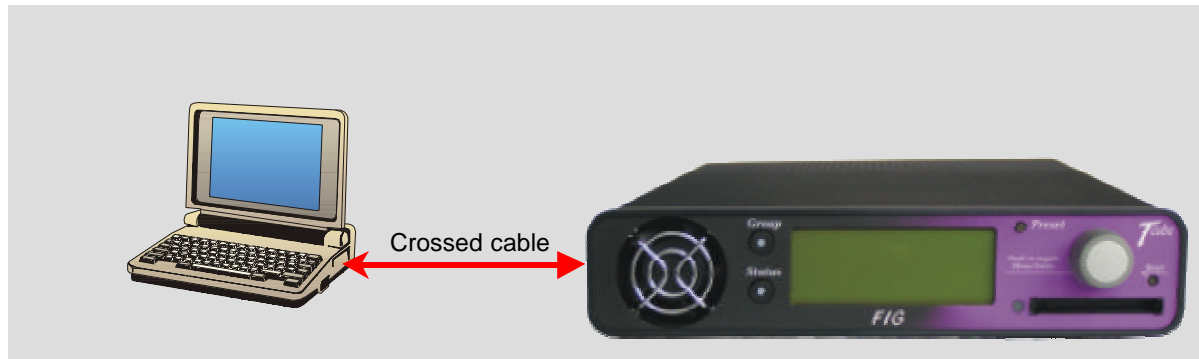


Figure 2 Network cabling without external Hub or switch



TcubeNet Basic in FIG is mandatory for TOMATO implementation

In the case of multiple units connected, make sure that the last digit of the Ethernet address of Fig are different.. **Refer to TOMATO user manual.**

Configuring Ethernet PC address

TCP-IP address of PC running TOMATO must be set up as

- fixed and equal to 176.23.0.X, with X>199
- mask equal to 255.255.0.0

Enabling Bootnet mode on FIG

On Fig, press RESET, then during boot when **GROUP = CANCEL RUN** is flashing, press **GROUP** button to get the OS operation screen

```
CF_OS   U1.10.04
PICAPP  U1.01.00
-----
GROUP=CANCEL RUN
```

In the set of menus, turn Wheel until **ENGINEER** is displayed in Reverse Video

```
Run
PAK Manager
PAK Loader
License Manager
License Loader
Setup
Engineer
```

Press Wheel to enter into this menu

A new sub-window appears that says

```
Information
System Setup
Config Manager
Flash Manager
```

Press Wheel to enter into this sub menu

Turn wheel until you see the menu BootNet Mode, then press wheel and set Bootnet as Enable

```
BootNet Mode
Disable  Enable
```

Press **GROUP** to validate

Preparing Fig for TOMATO remote operation

On Fig, press RESET, then during boot when **GROUP = CANCEL RUN** is flashing, press **GROUP** button to get the OS operation screen

```
CF_OS   V1.10.04
PICAPP  V1.01.00
-----
GROUP=CANCEL RUN
```



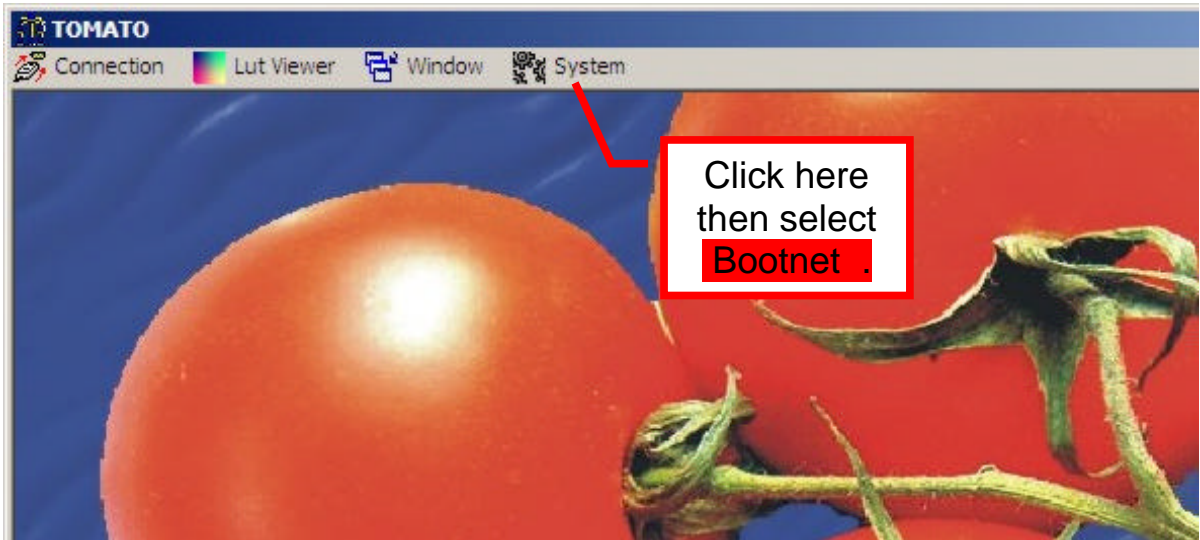
DO NOT CONFUSE

ORDINARY TOMATO OPERATION AND FIG UPDATE

While ordinary TOMATO use requires a FIG with a running application (e.g. LUT509), the update of FIG through TOMATO requires to have the FIG mini OS running. So make sure you have pressed the GROUP button after reset.

Running TOMATO Software

Launch the TOMATO.EXE file, splash screen will appear



A new screen shows

TCUBE: BootNet

Cherry/Fig OS

TCP/IP Configuration

Use KiwiNet Basic Configuration

IP: 176.23.3.1

Port: 9000

Workgroup ID: 1

Connection

Uncheck if FIG is not in KiwiNet Basic Configuration (not recommended)

Set up when in IP Static mode

Set up if FIG last Ethernet digit address is not set to 1

Press to connect to FIG

After **Connection**, different panels are displayed according to thumbnails

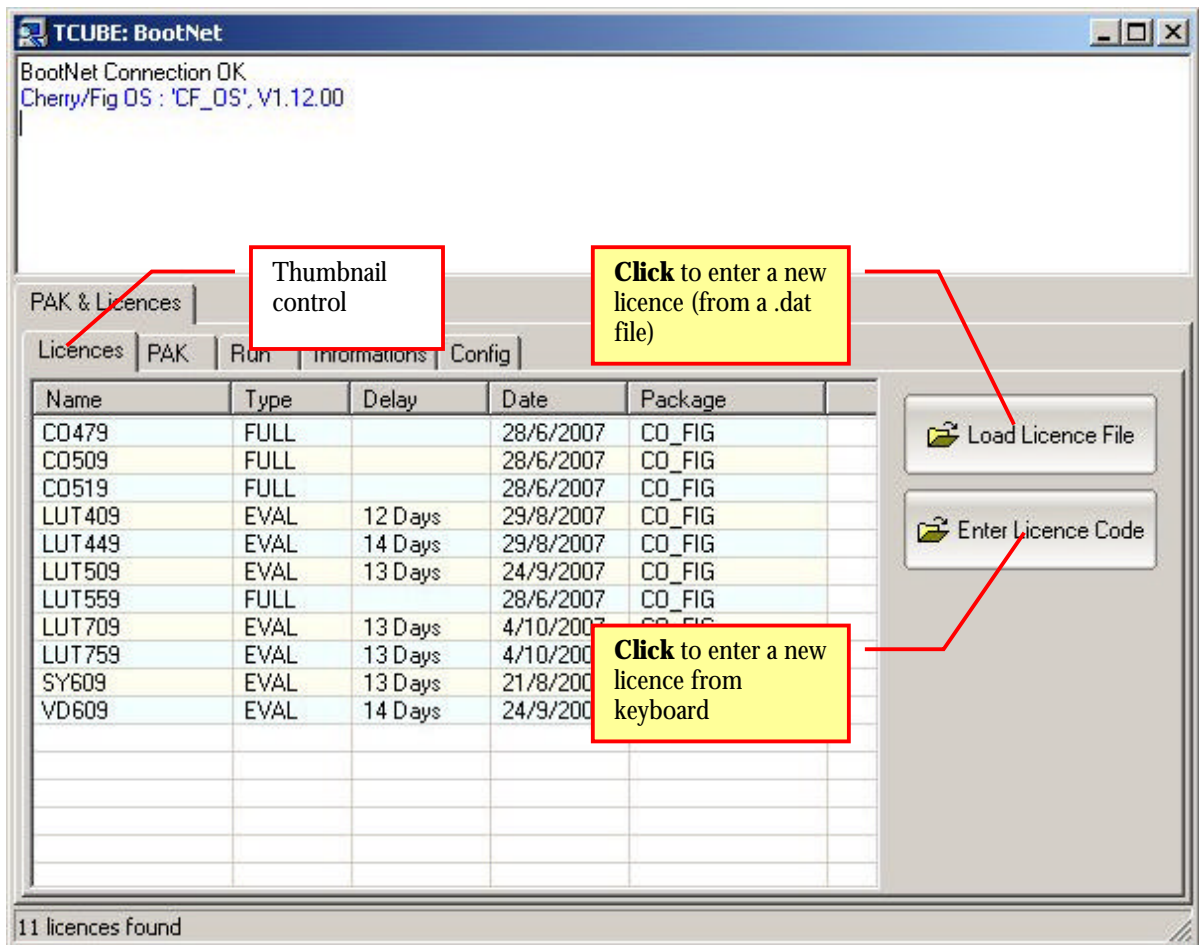
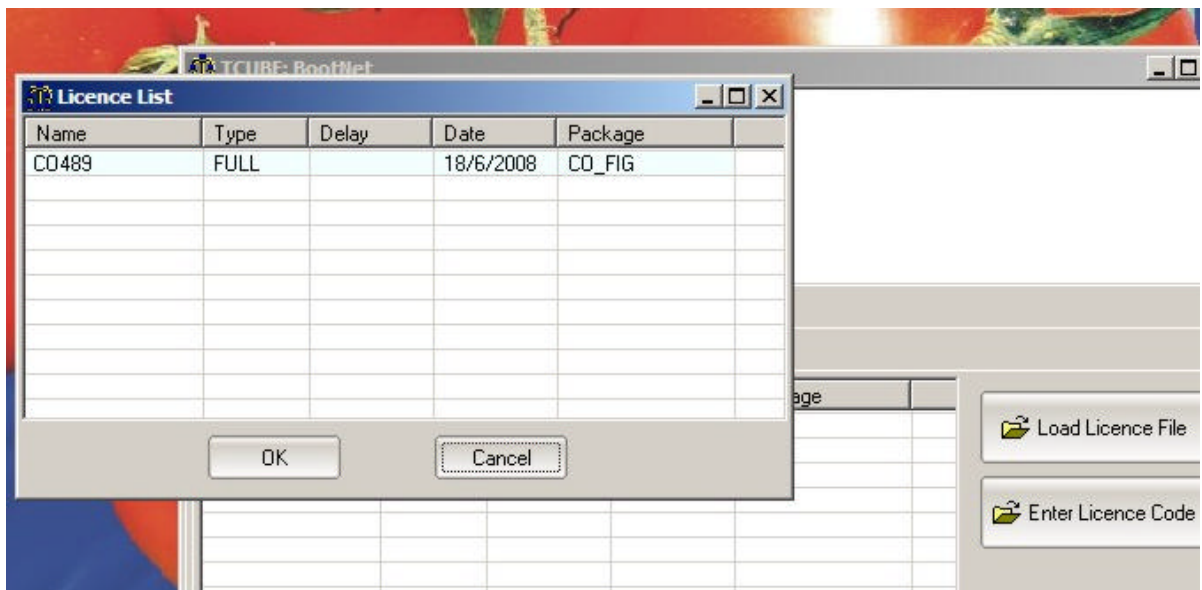
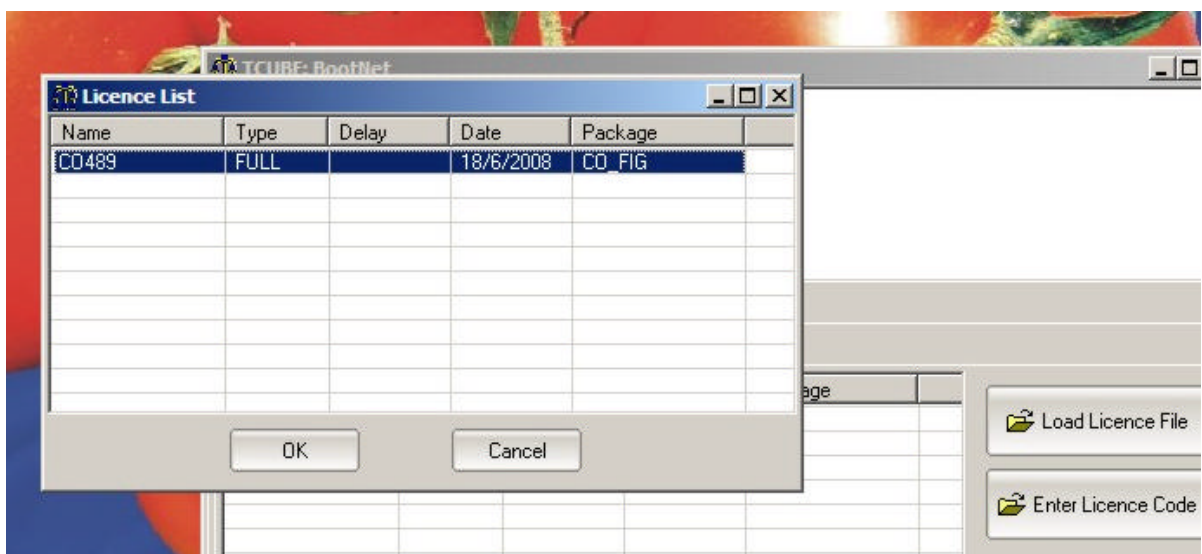


Figure 3 Licence panel

After having selected the licence files you want to transmit, a pop up screen (licence list) will appear:



Click on the desired files or use [Control + Click] to select multiple files of the list then press Ok (see below)



Licence (if valid) will be transferred into the FIG.

FIG UPDATE THROUGH TOMATO

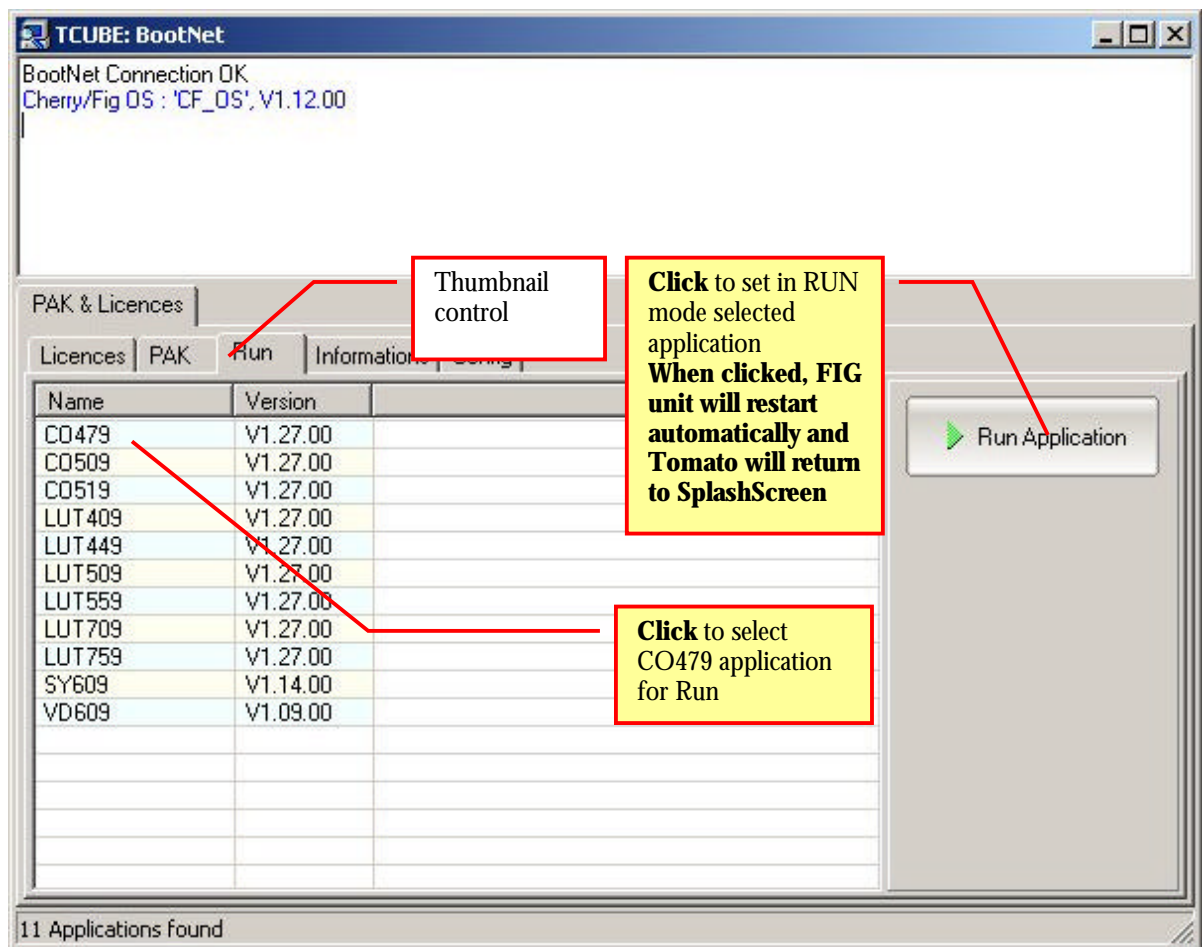


Figure 5 Run Panel

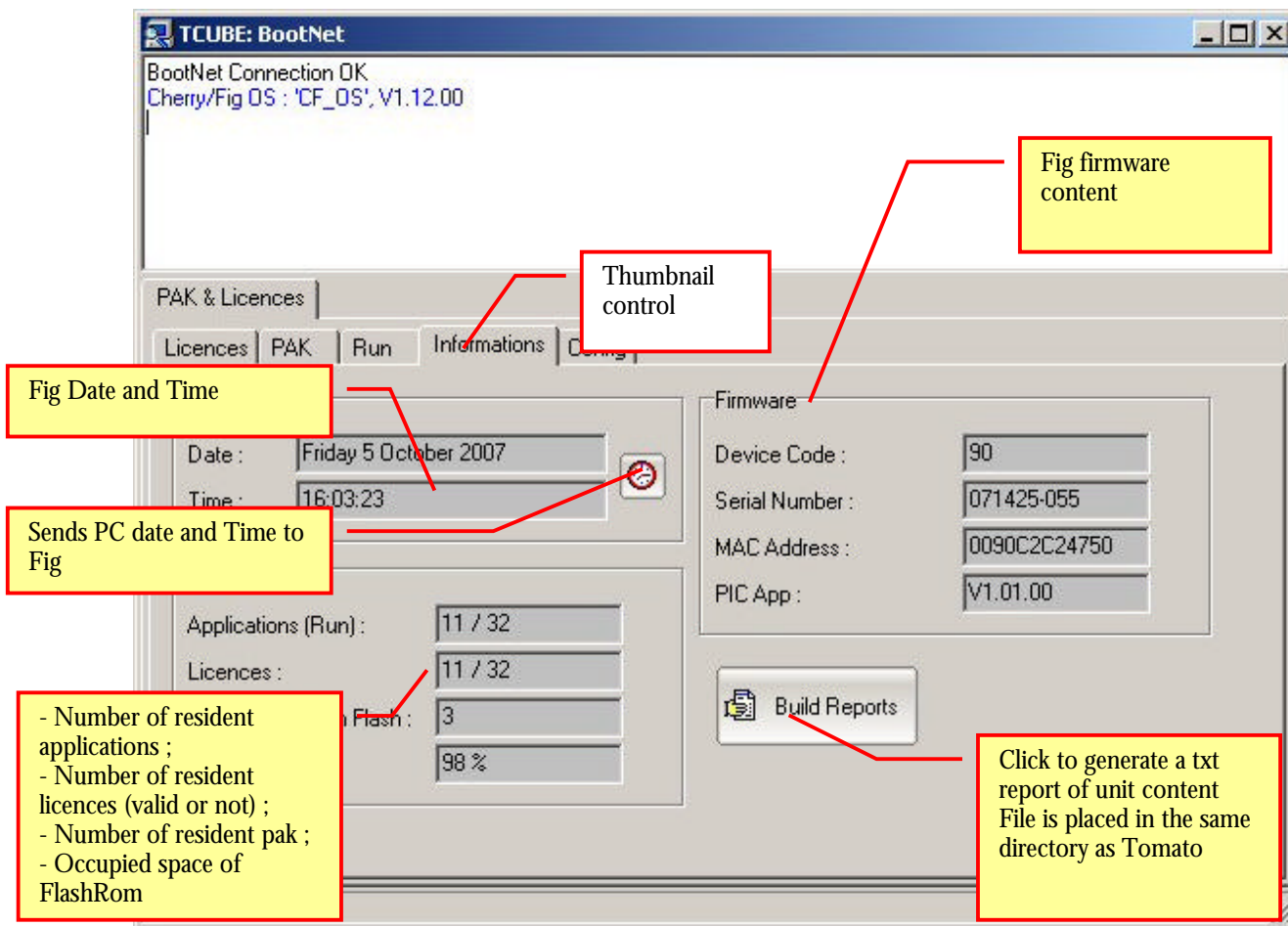


Figure 6 Information panel

FIG UPDATE THROUGH TOMATO

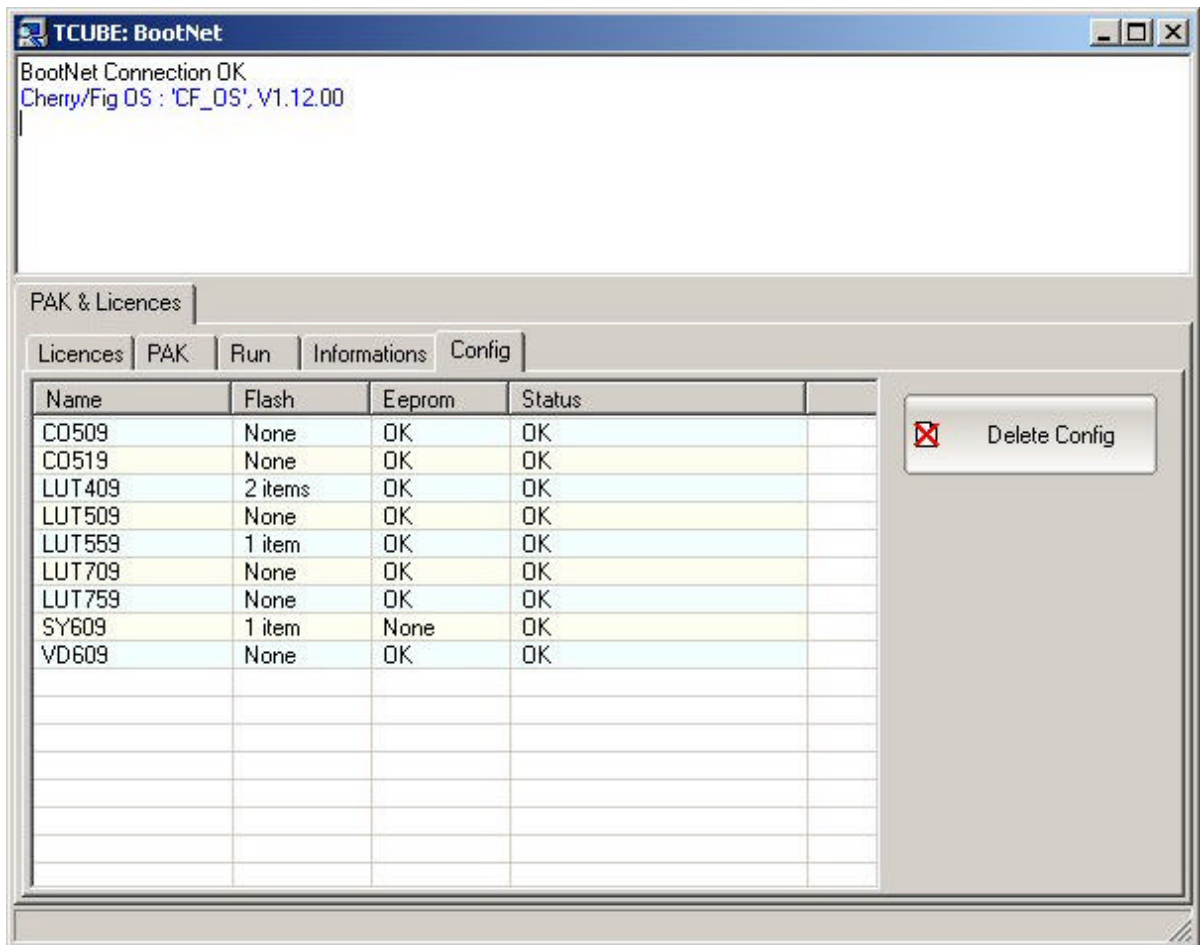


Figure 7 Configuration panel